

MILLARD
CARAVANS

BREAKAWAY



Your ticket to *freedom* since 1947

Off Grid





- 5 year Structural & 2 year Manufacturing Warranty
- Compliant to Australian Design Rules (ADR) – Approval VTA-060501
- Hot Dipped Galvanised Chassis designed & made by Millard
- Full piece roof
- Aluminium Frame Walls
- 900mm high Checker Plate
- Aluminium Composite Panels in a range of colours
- Honeycomb Floor (inert & recyclable) plus under galvanised sheeting
- Off Road Suspension - Cruisemaster ATX
 - Premium all-terrain suspension system that is suitable for all sealed and dirt roads, prolonged corrugations and rock crawling.
- D035 Coupling
- External Shower
- BF Goodrich 16" wheels
- 300AH Lithium Battery
- Enerdrive Battery Management System
- 2600W Inverter
- Diesel Heater
- Full under carriage coverage of exposed pipes
- Custom toolbox with Gas Bottles contained
- Stone Guard
- 2 x 95L Water Tanks + 110L Grey Tank
- Electronic Stability Control
- 2 Water Pumps

Cruisemaster ATX Suspension



Tandem Axle

ATX Air Suspension optional



- Options
- Hydraulic Brakes and Air control systems with differing levels of functionality
 - Upgrade to 3.7ATM with D045 coupling

Single Axle

ATX 3.0T Air Suspension optional



Options





Specifications



	16ft9"	17ft6"	19ft6"	20ft6" Family
Door Position	CD	CD or RD	CD or RD	CD
Standard Seating	L-Lounge	L-Lounge	Dinette	L-Lounge
Seating Options			L-Lounge	

Nominal Dimensions (mm)	16ft9"	17ft6"	19ft6"	20ft6" Family
External length	5310	5510	6110	6410
Internal Length	5150	5350	5950	6250
Total Length includes A Frame & Spare Wheel	7795	7995	8595	8895
External width (including Rollup Awning)	2500	2500	2500	2500
Internal width	2285	2285	2285	2285
Internal Height	2010	2010	2010	2010
Total Travel Height with AC (Indicative)	3180	3180	3180	3180

Weights (kgs)	16ft9"	17ft6"	19ft6"	20ft6" Family
Average Tare Weight	2500	2565	3000	3080
ATM (kgs) (based on Tuffride suspension for 16ft9 and 17ft6), (XT For 19ft6 and 20ft6)	3000	3000	3500	3500
Average Ball Weight	175 -215	235(CD) 200(RD)	230(RD) 270(CD)	280
Carry Load or Payload (Approximate)	500	435	500	420

Indicative weights, subject to change as dependent on the specification and options - See note 2

Indicative Height, subject to the wheel size, layout and load on the van axles/suspension.

Construction	16ft9"	17ft6"	19ft6"	20ft6"
Hot Dip Galvanised Chassis	*	*	*	*
Aluminium Wall Frame	*	*	*	*
Full Piece Composite Roof	*	*	*	*
Insulation to Walls and Ceilings	*	*	*	*
HoneyComb Flooring	*	*	*	*
Galvanized Sheeting under Floor	*	*	*	*
Pipe Lagging and Gal covers	*	*	*	*
Sheeting in Tunnel Boot with Drainage at each side	*	*	*	*
Double Bar Galvanised Rear Bumper with Spare Wheel	*	*	*	*

	16ft9"	17ft6"	19ft6"	20ft6" Family
4 Inch Raiser	*	*	*	*
Aluminium Composite Panel	*	*	*	*
Extended Draw Bar	*	*	*	*
Wheel Axle	Single	Single	Tandem	Tandem
Cruisemaster ATX Suspension ATM	3000kgs	3000kgs	3500kgs	3500kgs
Upgrade to 3.7 ATX including DO45	o	o	o	o

Exterior

BFGOODRICH MUD-TERRAIN T/A KM3 265/75R16 123/120Q Tyre fit with Rish Mill rim	*	*	*	*
Checker Plate - Black	*	*	*	*
Aluminium Composite Panel - White	*	*	*	*
Optional Aluminium Composite Panel - Silver or Charcoal or Dark Grey	o	o	o	o
Vinyl Decals Colours: Red, Blue, Silver, Matt Orange	o	o	o	o
2 x 95litre water Tanks	*	*	*	*
Dual Water Tank Inlets	*	*	*	*
Grey Water Tank (110 Litres)	*	*	*	*
Hot Water System - Tank (Gas and Electric Heating)	*	*	*	*
Foam Lagging around PVC drainage pipes Plus Gal Covers	*	*	*	*
Picnic Table	*	*	*	*
Mains Tap to A Frame & Mains Pressure	*	*	*	*
2 x 9kg Gas Bottles	*	*	*	*
3 x Solar Panels with Regulator (200watts each)	*	*	*	*
Additional Solar Panel (200watts)	o	o	o	o
External Awning with centre support Bracket	*	*	*	*
Annexe Lights : Door side x 3, Drivers Side x1	*	*	*	*
Front and Rear LED Bar Light	*	*	*	*
Gas Bayonet	*	*	*	*
External Speakers	*	*	*	*
Entrance Door 1850mm	*	*	*	*
Tool Box with Sliders	*	*	*	*
Reversing Camera	*	*	*	*

	16ft9"	17ft6"	19ft6"	20ft6" Family
DO35 Coupling	*	*	*	*
External Shower at Rear	*	*	*	*
External TV Point + Arm+ Locker	*	*	*	*
Dust Pressure System - Dometic	*	*	*	*
Dust Pressure System - Carafan CP700	o	o	o	o
Mesh on the A- Frame	o	o	o	o
Jerry Can Holders	o	o	o	o
Additional External Pump	*	*	*	*

Electrical

Batteries: Lithium BTECH 300 AH	*	*	*	*
ESYS-I: eSystem 60/40 AC/DC , T5-45 , Simarine	*	*	*	*
Epower 2600W Inverter w/RCD and AC Tfer Switch	*	*	*	*
2 x Anderson Plugs	*	*	*	*
2 dippers water level indicators	*	*	*	*
Smart TV	*	*	*	*
Downlights	24*	24*	27*	27*

Internals

CNC Cabinetry	*	*	*	*
Piano Hinges	*	*	*	*
Bi- Fold Dining Table	NA	NA	*	NA
Telescopic Dining Table with Tic Cushion	*	*	o	*
Exclusive Upholstery designs and Fabrics	*	*	*	*
Full Size Bedhead and Map Holder	*	*	*	*
Pelmets (Std : bedroom windows + Above seating)	*	*	*	*
Air Conditioner	*	*	*	*
Dometic RUA6408X 2 Door ABSRP Fridge 3WAY 188L	o	o	o	NA
Dometic RUA8408X 2 Door ABSRP Fridge 3WAY 224L	NA	NA	NA	o

	16ft9"	17ft6"	19ft6"	20ft6" Family
Dometic RUC 6408X 2 Door Compressor Fridge 188L	*	*	*	NA
Dometic RUC 8408X 2 Door Compressor Fridge 224L	NA	NA	NA	*
Dometic MC101 Full Oven 3 Burner + 1 Gas - Grill - Oven	*	*	*	*
Dometic MC102 Cooktop 3 Burner + 1 Gas - Grill	o	o	o	o
Eberspacher Airtronic D2 Diesel Heater	*	*	*	*
Microwave	*	*	*	*
Slimline RangeHood	*	*	*	*
Qflow Exclusive Front Loader Washing Machine	*	*	*	*
Winegard HD Antenna	*	*	*	*
Additional 24" LED TV	o	o	o	o
Sirocco Fans	o	o	o	o
Skylight Hatch with LED lighting (450x400mm)	*	*	NA	NA
Skylight Hatch with LED lighting (700x500mm)	NA	NA	*	*
Additional Hatch in Ensuite	o	o	o	o
Sliding Door at Ensuite	*	*	*	*
2 Bathroom Exhaust Hatches with LED	*	*	*	*
InLine water filter at Kitchen Tap with Gooseneck Tap	*	*	*	*

Safety

Breakaway Safety System	*	*	*	*
Fire Extinguisher	*	*	*	*
Smoke Alarm	*	*	*	*
Door - External 4 Pin lock with Security Screen	*	*	*	*
AL-KO ESC (Electronic Stability Control)	NA	NA	*	*
Stability Control System	*	*	*	*

Fabric/Splash Board, Vanity, Kitchen Bench

Number of Colour Combinations - Choose from MFLOW or Toura	15	15	15	15
--	----	----	----	----

Note 1:
The tow ball and tare weights are only a guide and will change depending on accessories that are fitted to your van. It is advisable to discuss this with your Millard Dealer covering your specific requirements.

Note 2:
Options are layout dependent and some options are not available on certain vans and should be discussed with your dealer

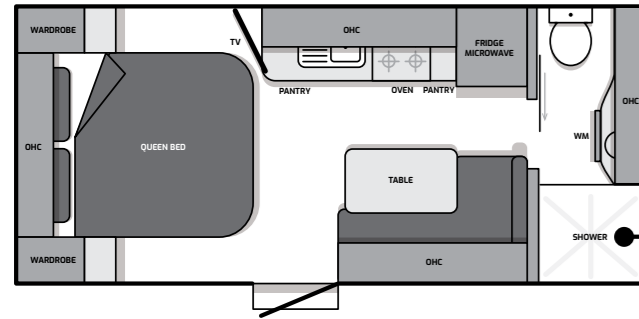
Note 3:
For Tow assist the suspension will be Enduro Tandem 12 Inch Brakes

Your ticket to *freedom*

Off Grid

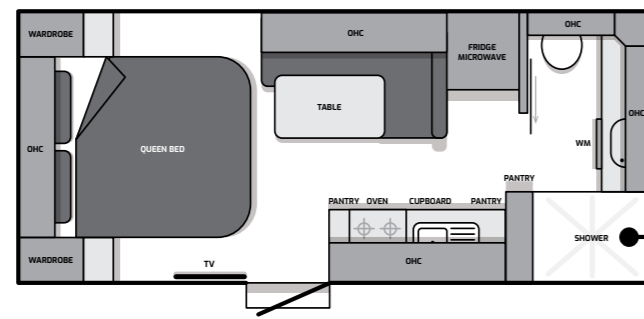
16ft 9

Centre Door (CD)

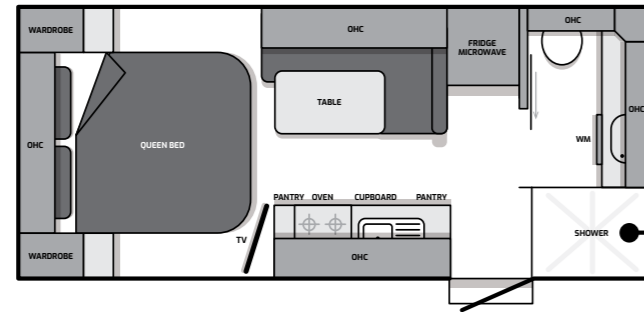


17ft 6

Centre Door (CD)

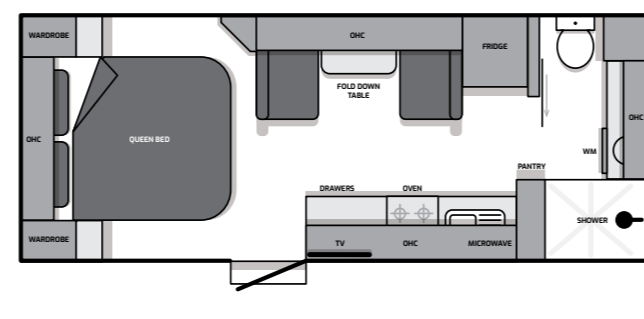


Rear Door (RD)

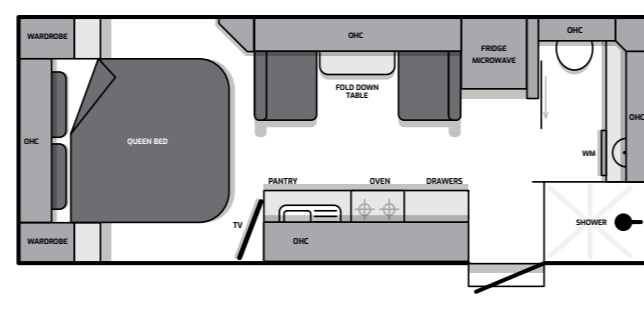


19ft 6 Dinette

Centre Door (CD)

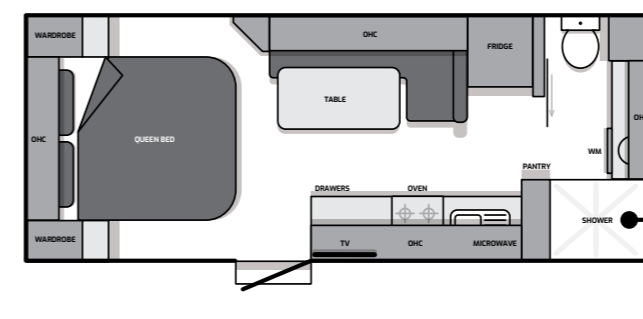


Rear Door (RD)

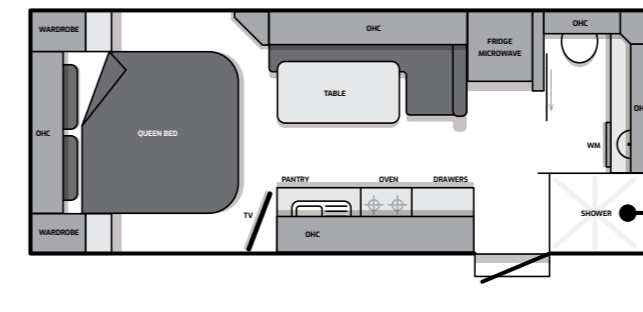


19ft 6 L-Lounge

Centre Door (CD)

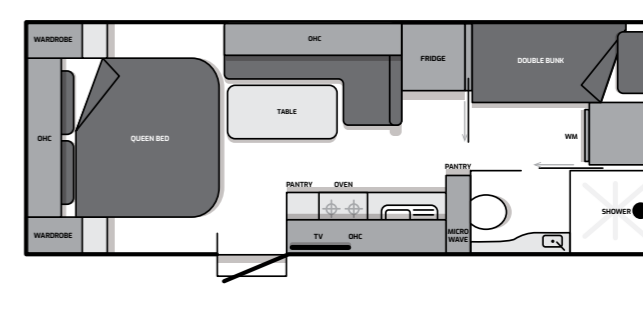


Rear Door (RD)



20ft 6 Family Van

Centre Door (CD)

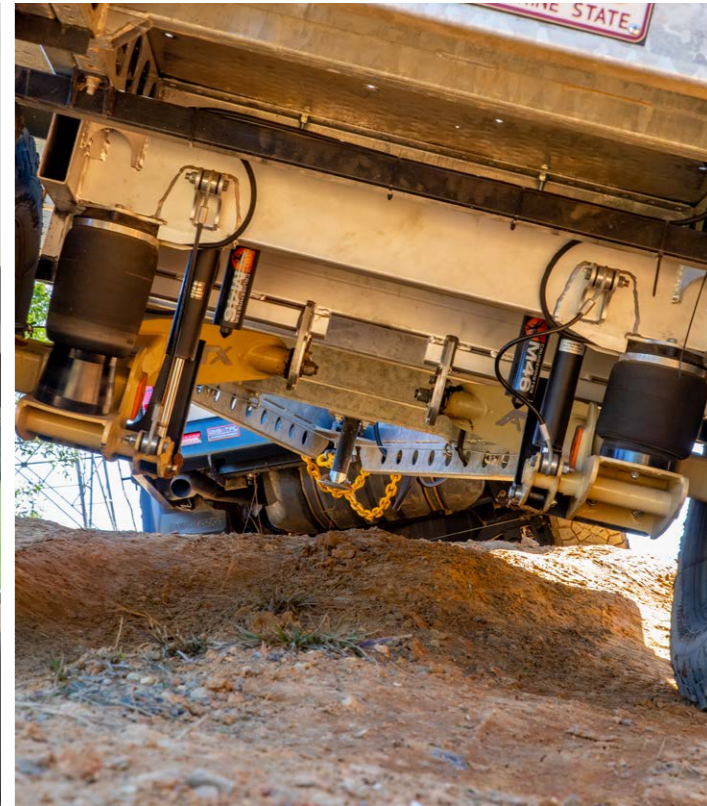
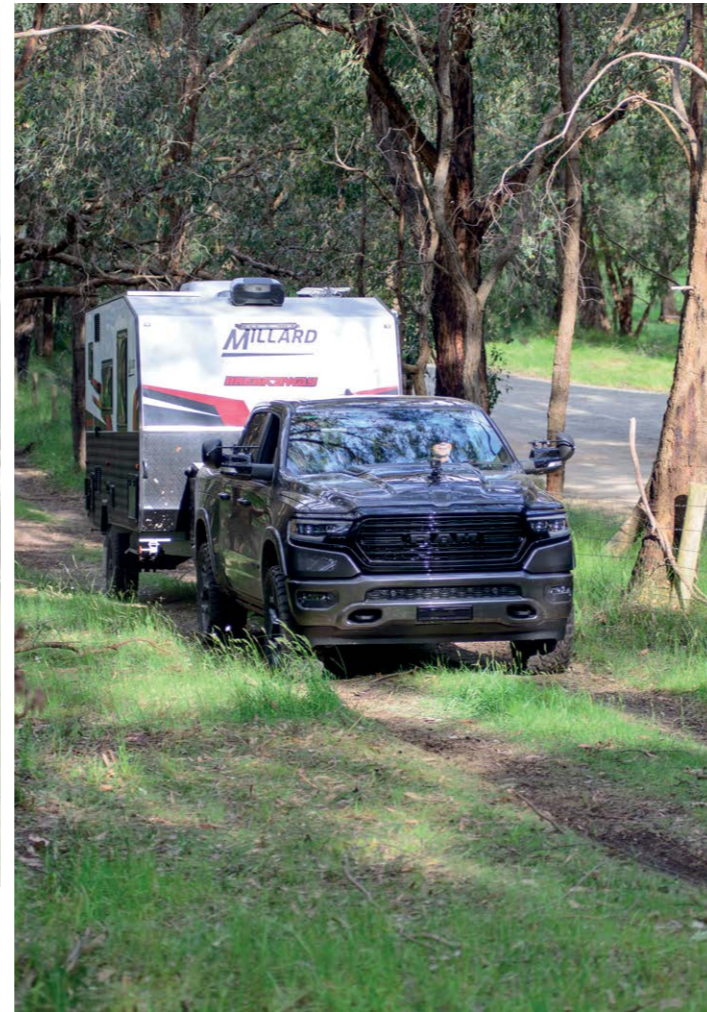


Key
 OHC Overhead cupboard
 Shower Shower
 MW Fridge
 MW Microwave
 WM Robe
 TV Television
 WM Washing Machine Robe
 TV Television

Key
 OHC Overhead cupboard
 Shower Shower
 MW Fridge
 MW Microwave
 WM Robe
 TV Television
 WM Washing Machine Robe
 TV Television

BREAKAWAY

Built Tough & Ready for Action



Your ticket to *freedom*

Off Grid



Your ticket to *freedom* since 1947

Your Millard Caravans Dealer:

Unit 1/36-42 Orange Grove Road,
Warwick Farm NSW 2170

02 9829 2055

info@millardrv.com.au



millardcaravans.com.au

  @millardcaravans